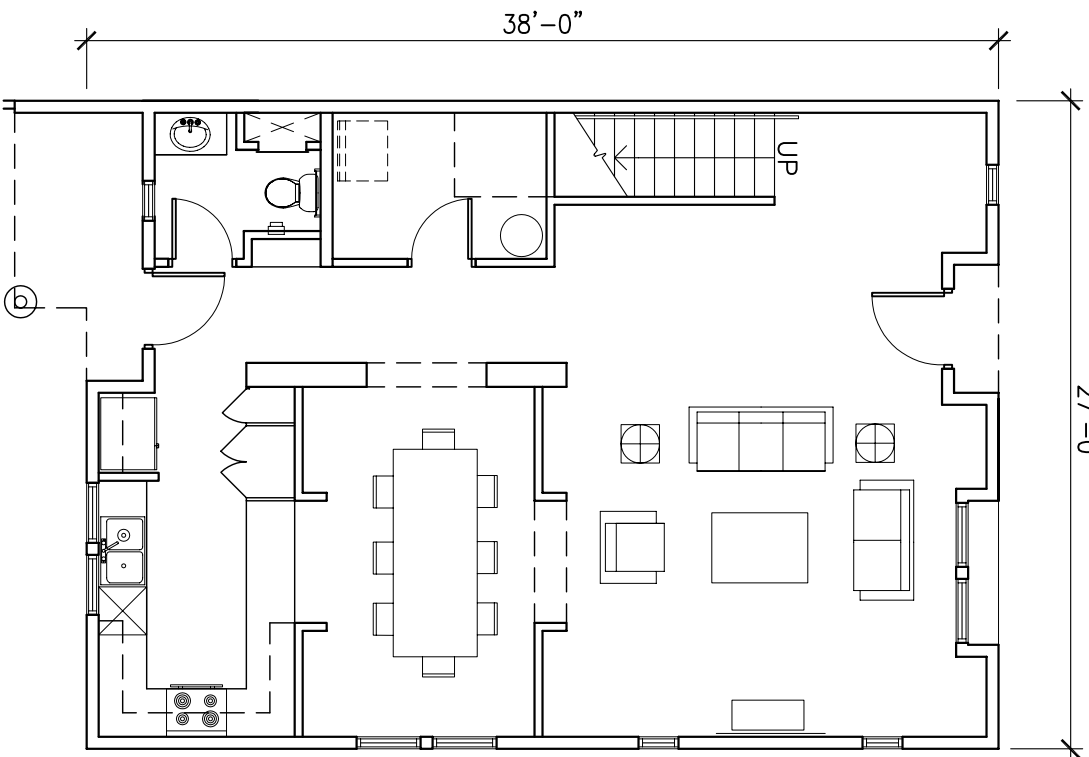
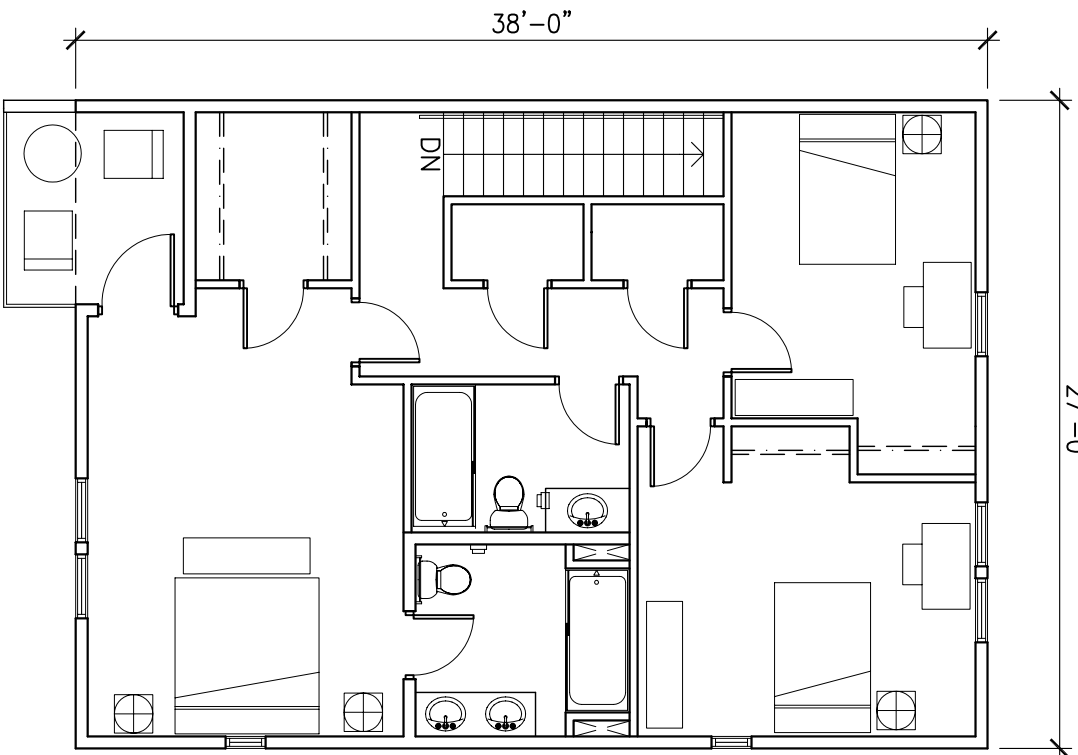


STREET

27'-0"



27'-0"



COURTYARD

3 BR TOWNHOME

SCALE: 1/8" = 1'-0"

2,052 SQ. FT. INTERIOR
562 SQ. FT. GARAGE/STORAGE
2,1614 SQ. FT. TOTAL

BelVedere
Urban Courtyard Living

05.11.06

THE HARTMAN + MAJEWSKI
DESIGN GROUP
Architects • Planners • Interior Design

